



Member Login: [Register](#)
 e-mail: [Forgot Password](#)
 password:


[Site FAQ](#)

ADVERTISEMENT

Search over 100,000 IT

Ask an IT Question!

SQL Server with Mr. Denny

[>> VIEW ALL POSTS](#)
[« Microsoft SQL Server 2008 goes RTM](#)
[Back To Basics: The RESTORE DATABASE Command »](#)

AUG 7 2008 11:00AM GMT

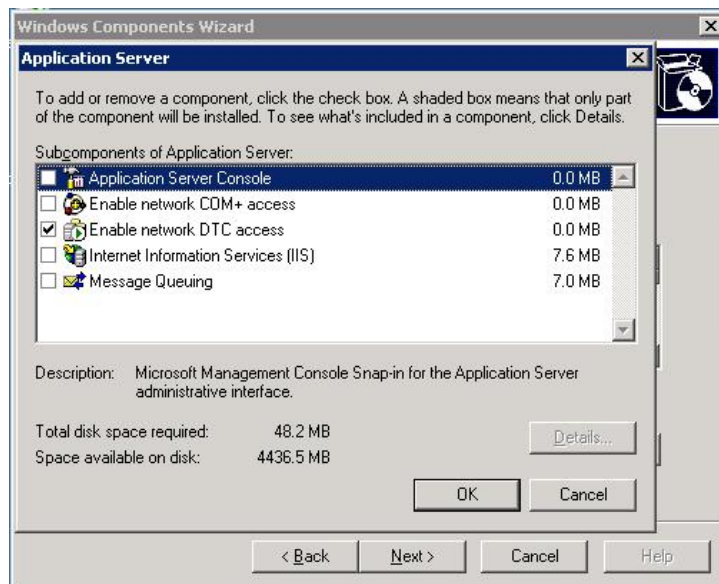
How to configure DTC on Windows 2003

 Posted by: [Denny Cherry](#)
[KB 250367](#), [MS DTC](#), [MSCS](#), [RPC](#), [SQL](#), [Windows Server 2003](#)

Back in the Windows 2000 days, getting DTC to work was easy. It was setup by default to work. There wasn't a whole lot of configuration which needed to be done to get it setup correctly.

When Windows 2003 was released things got a bit different. All of a sudden DTC wasn't working by default, and there wasn't a whole lot of documentation around on how to get it working. The first thing to realise about DTC on Windows 2003 is that it isn't completely installed by default. The basics of DTC are there, but network support isn't enabled by default. What's the point of that you ask? This will allow two applications installed on the same machine to use a single transaction, but that transaction isn't going to be able to go between machines.

The first thing that we need to do is install the network half of DTC. We do this in Add/Remove Programs under the Add/Remove Windows Components button. When the Windows Components Wizard opens select Application Server and click Details. You'll then want to check the "Enable network DTC access" check box.



After that, finish running through the wizard and network DTC will be installed. Don't get to excited yet (Distributed transactions are exciting right?), we still need to configure DTC. To do this we need to open the Component Services MMC from the Administrative Tools menu.

About This Blog

Interesting tidbits about Microsoft SQL Server (and lots of other stuff about IT) that will help you build a rock solid database server and keep it running for many years to come.

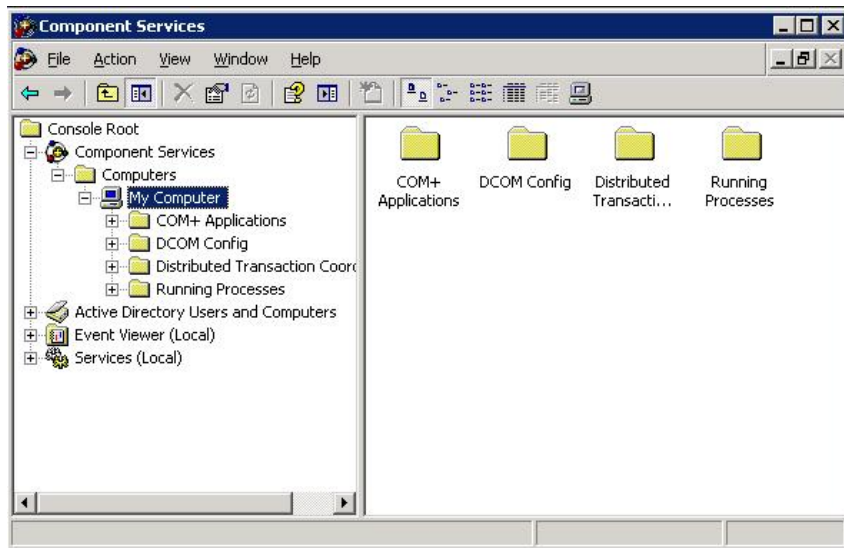
>> [READ MORE ABOUT THIS BLOG](#)

Browse This Blog's Tags

AlwaysOn, Article, Back To Basics, Backup & recovery, Brent Ozar, Cache, Certifications, Clustering, Database, Database Administration, Database security, Data Security, EMC, EMC World, Encryption, Indexing, Index Performance, **In Person Events**, Microsoft Windows, PASS, Performance Problems, Query tuning, Quest Software, Replication, Security, Service Broker, SoCal Code Camp, Social Commentary, **SQL**, **SQL PASS**, **SQL PASS 2011**, **SQL Saturday**, **SQL Server**, **SQL Server 11**, **SQL Server 2000**, **SQL Server 2005**, **SQL Server 2008**, **SQL Server 2008 R2**, **SQL Server 2012**, **SSWUG**, **Storage**, **T/SQL**, **Tables**, **Top 10**, **Twitter**, **Virtualization**, **VMware**, **Webcast**, **Windows 7**, **Windows 2008**

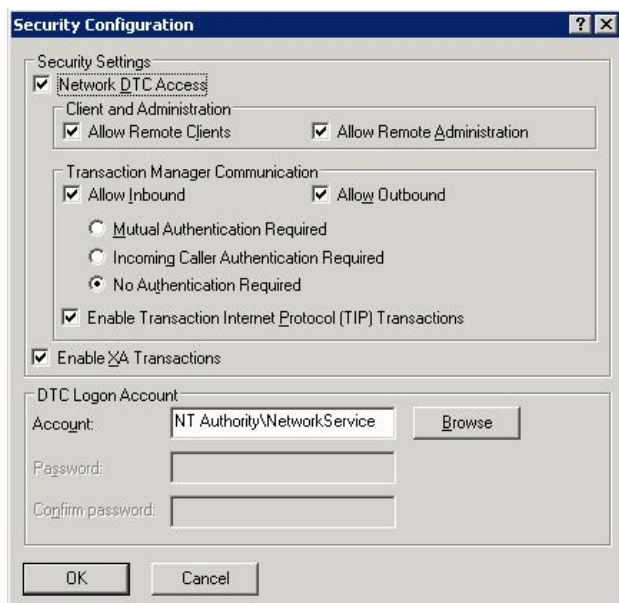
Archives

[September 2013](#)
[August 2013](#)
[July 2013](#)
[June 2013](#)
[May 2013](#)
[April 2013](#)
[March 2013](#)
[February 2013](#)
[January 2013](#)
[December 2012](#)
[November 2012](#)
[October 2012](#)
[September 2012](#)
[August 2012](#)
[July 2012](#)
[June 2012](#)
[May 2012](#)
[April 2012](#)
[March 2012](#)
[February 2012](#)
[January 2012](#)
[December 2011](#)



From there, right click on My Computer and select properties and select the MSDTC tab. (If the network components aren't installed this tab usually won't show up.) From the MSDTC tab select the Security Configuration button (bottom left). When the next screen opens all the check boxes will be unchecked. If you aren't sure what you need to enable, simply check everything and select No Authentication Required. If you have setup a DTC Logon Account which is a network account on all machines then you can require authentication if you would prefer. If any of the machines which are going to be involved with the transaction are clustered via Microsoft Cluster Service you must setup all machines in the transaction to No Authentication Required. DTC when setup as part of a cluster does not support Authentication.

When deciding which Authentication to use, every machine in the transaction should have the same authentication settings. So if any machine is clustered all machines using DTC that talk to the cluster, or that talk to machines which talk to the cluster, etc will need to be setup for No Authentication Required.



From here simply click OK, then OK. It will prompt you that DTC needs to be restarted. Allow it to do so, and you will be all setup to use distributed transactions.

When configuring DTC on a cluster you only need to configure one node. This is because DTC is a cluster aware service so when you install DTC after setup clustering (or you setup clustering after installing DTC) the DTC service will already be setup as a clustered resource within the first cluster resource group created. When you configure DTC for network access on a cluster the settings are written to the Quorum drive as well as the system registry which allows both nodes to share the settings. If you have a cluster and you have to go through a firewall with DTC and have followed [KB Article 250367](#) you will need to have more than 20 ports available to DTC. This is because when you configure the DCOM protocols to use specific ports you are configuring all of RPC to use those specific ports. This means that the cluster administrator needs to use these ports as does the Component Services window which monitors for distributed transactions. When dealing with a cluster it is recommended that you have at least 100 ports open between the machines within the transaction.

If you need to setup MS DTC to talk to another DTC coordinator then you will probably need to use the No Authentication Required setting unless they support the other options. Check with the vendor of the other coordinator to find out.

[November 2011](#)

[October 2011](#)

[September 2011](#)

[August 2011](#)

[July 2011](#)

[June 2011](#)

[May 2011](#)

[April 2011](#)

[March 2011](#)

[February 2011](#)

[January 2011](#)

[December 2010](#)

[November 2010](#)

[October 2010](#)

[September 2010](#)

[August 2010](#)

[July 2010](#)

[June 2010](#)

[May 2010](#)

[April 2010](#)

[March 2010](#)

[February 2010](#)

[January 2010](#)

[December 2009](#)

[November 2009](#)

[October 2009](#)

[September 2009](#)

[August 2009](#)

[July 2009](#)

[June 2009](#)

[May 2009](#)

[April 2009](#)

[March 2009](#)

[February 2009](#)

[January 2009](#)

[December 2008](#)

[November 2008](#)

[October 2008](#)

[September 2008](#)

[August 2008](#)

[July 2008](#)

[June 2008](#)

[May 2008](#)

[April 2008](#)

[March 2008](#)

[February 2008](#)

[January 2008](#)

[December 2007](#)

[November 2007](#)

[October 2007](#)

Blog Roll

[SearchSQLServer.com](#)

[Tek-Tips](#)

[Chrissie1's Blog](#)

[Denis Gobo](#)

[Kevin Kline's Blog](#)

[Dave Talks Shop](#)

[Virtualization Pro: A SearchVMware.com blog](#)

[SQLServerPedia.com Wiki](#)

[Remus Resanu](#)

[DuringLunch.com fresh bits.](#)

[Coffee And Code](#)

[Securing SQL Server](#)

[SQL Excursions](#)



[Troubleshooting SQL Server Storage Problems](#)

[Denny Cherry Independent Consultant](#)

[SQL Server with mrdenny In Spanish](#)

(These are the settings which you need no matter which version or edition of SQL Server you have installed.)

Denny

 [Comment](#)  [RSS Feed](#)  [Email a friend](#)

Subscribe to Alerts

[Help](#)

 [Google™](#)  [MY YAHOO!](#)  [ATOM FEED](#)

[RSS feed of SQL Server with Mr. Denny](#)

Comment on this Post

Leave a comment:

REGISTER / LOG-IN TO DISCUSS

Submit your e-mail address below to continue

E:

[Continue](#)

[Community Blog](#) | [About Us](#) | [Contact Us](#) | [FAQ](#) | [Terms of Use](#) | [DMCA Policy](#)

TechTarget provides enterprise IT professionals with the information they need to perform their jobs - from developing strategy, to making cost-effective IT purchase decisions and managing their organization's IT projects - with its network of technology-specific Web sites, events and magazines.

All Rights Reserved, [Copyright 1999-2013, TechTarget](#) | [Read our Privacy Policy](#)
[Questions and Answers Index 1](#) | [Questions and Answers Index 2](#) | [IT Topics Index 1](#) | [IT Topics Index 2](#) | [Blogs Index](#) | [Blogs Tags](#)

